



1 Albert Embankment, London
SE1

GARTONJONES.COM



1 Albert Embankment, London , SE1

£525 Per Week

A modern 1-bedroom apartment offering 394sq.ft (36.6sq.m) available to rent on the 5th floor of Parliament View Apartments, a popular residential development located on the banks of the River Thames by Lambeth Bridge and within easy reach of the Houses of Parliament. This well-presented property is offered on a furnished basis and further benefits from an open plan reception room with full width floor to ceiling windows, an integrated kitchen, comfort cooling, wood flooring, built in wardrobes to the bedroom and residents have the benefit a 24-hour concierge and access to a resident's gym. Parliament View is moments from Westminster, Waterloo and Vauxhall underground stations providing easy access into Central London.

Please note furniture may differ to that shown in the current photos.

- Electricity Supply — Mains | Water Supply — Mains | Sewerage — Mains | Heating — Comfort Cooling
- Broadband & Mobile Signal: Check Coverage via Ofcom
- Parking: No Parking Included
- Lift Access
- Building Safety: EWS1 Available on Request
- Council Tax Band E (London Borough of Lambeth)
- 12 Month Minimum Term
- 5 Week Security Deposit
- Holding Deposit equivalent to 1 week of rent
- Rent to be payable monthly in advance
- EPC Rating B (83)

- 1 Bedroom
- 394sq.ft (36.6sq.m)
- Open-Plan Reception Room
- Modern Integrated Kitchen
- Floor To Ceiling Windows In All
- Wood Flooring
- Comfort Cooling
- 24 Hour Concierge
- Residents Gym
- 0.5 Miles to Lambeth North Station

GARTON JONES.COM

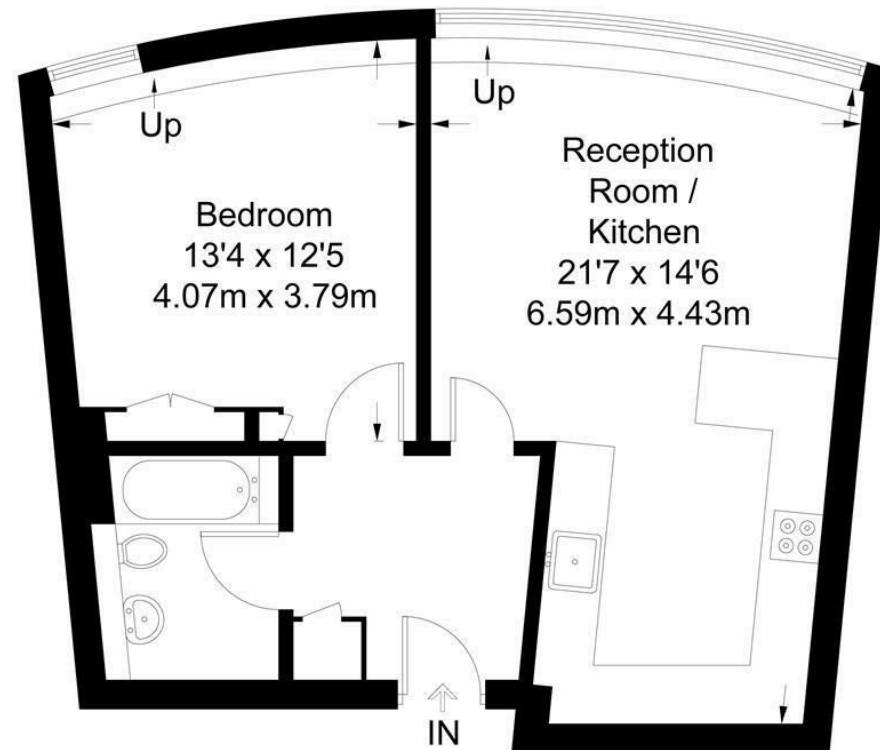
9 Albert
Embankment
London
SE1 7SP

Lettings:
+44 (0) 20 7735 1888
nineelms@gartonjones.com
www.gartonjones.com



Parliament View

Approximate Gross Internal Area = 553 sq ft / 51.4 sq m



Not to scale, for guidance only and must not be relied upon as a statement of fact.
All measurements and areas are approximate only and have been prepared in
accordance with the current edition of the RICS Code of Measuring Practice.

